



NOTICES TO MARINERS

Admiralty Charts 3713 and 3715

To: All Vessels, Shipping Agents, Marine Services Provider and all other concerned parties


RECALLING Mina Zayed Harbour Master Direction number 01/2013 issued 04th April 2013 concerning the implementation of draft Limitations for vessels calling Mina Zayed, Freeport and New Freeport Mina Zayed.

HAVING CONSIDERED, those measures have been taken based on the latest Bathymetric survey project carried out by ADPC in order to ensure the safety of navigation and enhance the protection the Marine environment within ADPC ports.

ADPC invites and urges all port users to give due consideration to the recently issued UKHO Notice to Mariners and Block (NM3467/13 published in NM weekly 32/13 on 08/08/13) which affects and updates the admiralty charts BA 3713 and BA 3715 for the changes to the depths and the inclusion of other additional depths within these charts.

All users are advised to adhere and comply with all directions.

A copy for the Notice to Mariners and Block NM3467/13 is attached.


Captain / Adil Ahmed Banihammad
ADPC Chief Harbour Master



NMWebSearch Chart Update Results

3467/2013 *UNITED ARAB EMIRATES - Abu Dhabi (Abū Zaby) - Mīnā' Zāyid and Approaches - Depths. Legends.

Source: Abu Dhabi Ports Company

Chart 3715 (INT 7224) WGS84 DATUM

Insert	depth 9 ₈ enclosed by 10m contour	24° 35'·07N., 54° 20'·06E.
	depth 9 ₄ and extend 10m contour W to enclose	(a) 24° 34'·53N., 54° 20'·38E.
	depth 9 ₂ enclosed by 10m contour	24° 32'·96N., 54° 22'·51E.
	depth 6 ₈	24° 32'·91N., 54° 20'·68E.
	depth 7 ₂	(b) 24° 32'·77N., 54° 20'·43E.
Amend	legend to, <i>Dredged to 14.3m (2012)</i> , centred on:	24° 33'·68N., 54° 21'·75E.
Delete	depth 10, close E of:	(a) above
	depth 8 ₃ , close NNW of:	(b) above

Chart 3715 (INT 7224) (plan, Mīnā' Zāyid) WGS84 DATUM

Insert	the accompanying block, showing amendments to depths and legends, centred on:	24° 31'·575N., 54° 23'·615E.
Amend	legend to, <i>Dredged to 5.9m (2012)</i> , centred on:	24° 31'·659N., 54° 22'·669E.

[Block-Colour](#)

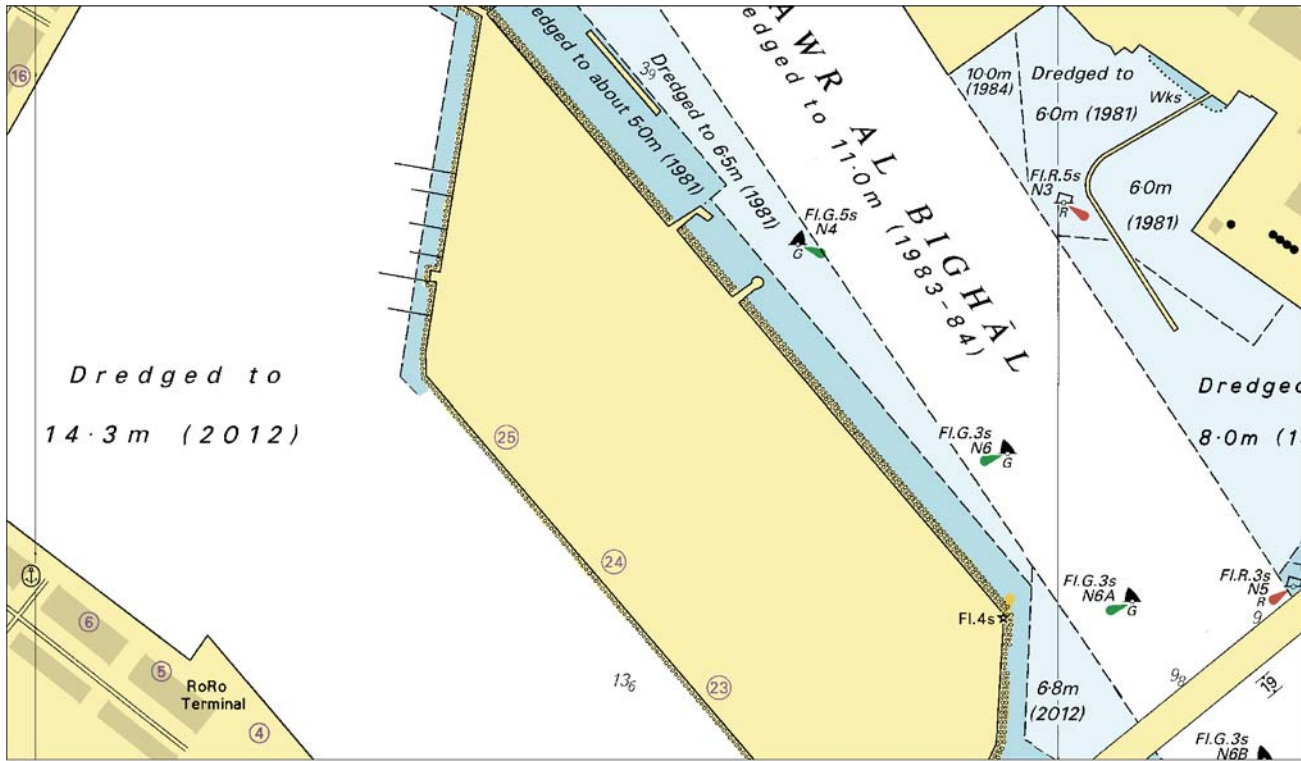
NMWebSearch Chart Update Results

**3467/2013 *UNITED ARAB EMIRATES - Abu Dhabi (Abū Zaby) - Mīnā' Zāyid and Approaches -
Depths. Legends.**

Source: Abu Dhabi Ports Company

Chart 3713 (INT 7223) WGS84 DATUM

Insert	depth 9 ₇ enclosed by 10m contour		24° 37'·46N., 54° 16'·82E.
	depth 10 ₂		24° 37'·04N., 54° 17'·40E.
	depth 9 ₈ enclosed by 10m contour		24° 35'·07N., 54° 20'·06E.
	depth 9 ₄ and extend 10m contour NW to enclose	(a)	24° 34'·53N., 54° 20'·38E.
	depth 9 ₂ enclosed by 10m contour		24° 32'·96N., 54° 22'·51E.
	depth 6 ₈		24° 32'·91N., 54° 20'·68E.
	depth 7 ₂	(b)	24° 32'·77N., 54° 20'·43E.
Amend	legend to, <i>Dredged to 14.3m (2012)</i> , centred on:		24° 37'·58N., 54° 16'·44E.
			24° 33'·71N., 54° 21'·70E.
Delete	depth 10, close SE of:	(a)	above
	depth 8 ₃ , close NNW of:	(b)	above



Block for Chart No 3715